



# CATALOG PRODUCT

## CATEGORY

Bust Duct Rubber Below

1

Flexible Bust Duct Connector

2

Expansion Joints

3

## APPLICATION

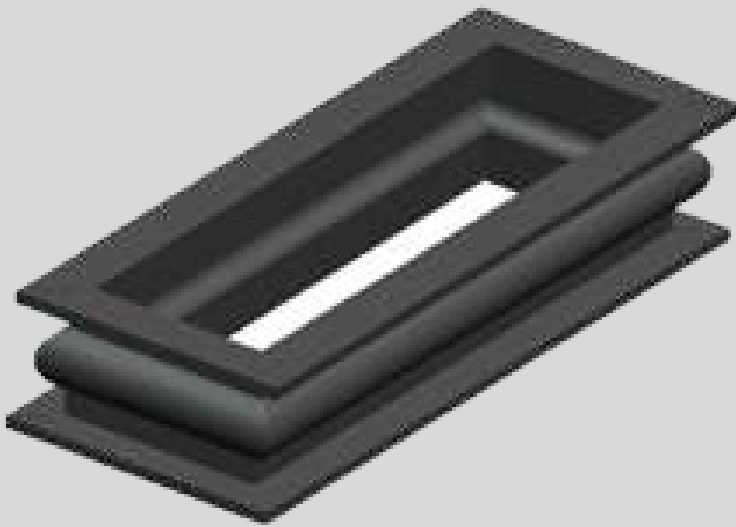
Bus Duct Below or Flexible Bus Duct connectors or sometimes is called Expansion Joints are used in ducting systems to reduce vibration transmission, shock, accommodate thermal movements with minimum stress to the ductwork, and compensation of mechanical misalignment. Since pressure requirements in ducts are very low compared to piping systems, they are manufactured in lighter construction to be more responsive to the reduced stiffness of sheet metal ducting. Designs are always airtight to prevent particle intake or leakage. These products come in many configurations as no standard design can meet the varied scope, service, or connection requirements. They can be shaped in round, square, rectangular, round on one end and square on the other, and even "T" or "L" shaped. The rubber material will determine the application in different environments, such as high humidity, high or low temperature, mechanical strength, sulfuric atmosphere, or high pollutant. However, the common characteristics are flexibility and long life.

## MATERIAL

The expansion joints are in all rubber with no reinforcement, the most common construction is natural rubber or synthetic liner, plies of rubber impregnated cord or fabric, and a rubber cover. Polymers available are Natural Rubber (Polyisoprene), EPDM, SBR, Neoprene, Butyl, Nitrile, Silicone, and Viton (for the high-temperature environment).

## SHAPE

Rectangular, square, round, combination of round-square ends, T-shape, L-shape alternative, others.



EEIFLEX™ Rectangular



EEIFLEX™ Round

## TECHNICAL SPECIFICATION

Custom Design Flexibility  
Max. Operating Pressure  $\geq 200$  mm WC  
Hardness  $\geq 30$  shore A  
Elongation at break  $\geq 300\%$   
Tensile Strength  $\geq 70$  kg/cm<sup>2</sup>  
Insulation Resistance  $\geq 50$  M $\Omega$  at 1,000 V

# OUR GALLERY



**PLTU TANJUNG JATI B UNIT 3**



**PLTA SAGULING UNIT 2**

## CUSTOMER EXPERIENCE

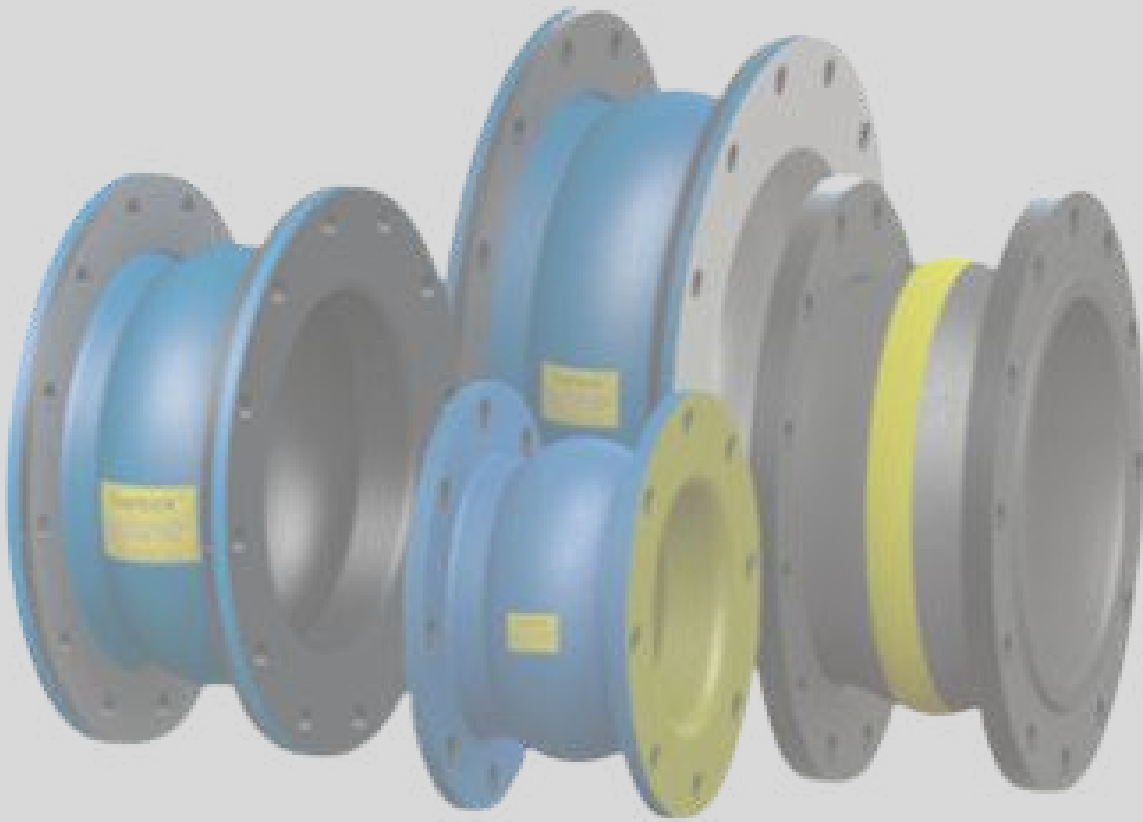
EEIFLEX™ is an Indonesia-made product, designed, and manufactured in Indonesia, the production facility is established in Legundi, Gresik, East Java Indonesia. EEIFLEX™ has been served for customers throughout Indonesia regions in various segments including utilities, industrial, and commercial, the products have been applied in various projects such as

- ▶ PLTA SAGULING
- ▶ PLTU TANJUNG JATI B
- ▶ PLTS CIRATA

EEIFLEX™ also a brand of flexible rubber that has been used by major Customer in Indonesia.

- ▶ PT. ABB SAKTI INDUSTRI
- ▶ PT. INDONESIA POWER
- ▶ PT. KOMIPO PEMBANGKITAN JAWA BALI

It does not only serve end-user customers but also B2B customers such as the Transformers OEMs and Contractors in Indonesia.



### MAIN OFFICE

88 Building Tower A, 10th Floor  
Jl. Casablanca Kav. 88, Jakarta  
Selatan, DKI Jakarta, Indonesia 12870  
Tel.: +62 815 822 3997  
Email : [sales@energientelemi.co.id](mailto:sales@energientelemi.co.id)

### OVERSEAS BRANCH OFFICE

3530 Ivy Commons Drive 202  
Raleigh, North Carolina, U.S.A 27606  
Tel.: +1 984 895 3143  
Email: [putu.raditya@energientelemi.co.id](mailto:putu.raditya@energientelemi.co.id)

### WORKSHOP

Workshop Gresik  
Komplek Pergudangan Legundi, Driyorejo,  
Gresik  
Jawa Timur, Indonesia 61177  
Tel.: +62 813 2752 1983  
Email: [bram.azarya@energientelemi.co.id](mailto:bram.azarya@energientelemi.co.id)

### EAST INDONESIA BRANCH OFFICE

Jl. Swakarya No. 10B, Kekalik  
Sekarbela, Mataram, Nusa Tenggara Barat  
Tel.: +62 813 1055 0694  
[nisfudin.rahmat@energientelemi.co.id](mailto:nisfudin.rahmat@energientelemi.co.id)

### Follow Us



PT. Energi Entelemi Indonesia



[energientelemi\\_indonesia](https://www.instagram.com/energientelemi_indonesia)



[www.eei.co.id](http://www.eei.co.id)